



# SMS Integration Setup

## Quick Reference Guide

Published Date: October 17

### Introduction

In Maestro versions 5.1 and higher, users now have the ability to send SMS (Short Message Service) commonly known as Text Messages to a recipient's SMS enabled cell phone.

SMS (Short Message Services) is messaging service supported by many mobile phones that allow short text messages, typically in the region of 160 characters, to be sent between mobile devices or between computers and mobile devices

In Maestro, users have the ability to send copies of trace and staff messages to a clerk's cellphone and send an alert to a guest's cellphone.

Currently, in Maestro Versions 5.1 and 5.2, only Clickatell is available to be interfaced with Maestro. In Maestro versions 5.3 and higher, users can choose between Clickatell and Swift SMS Gateway.

### Configuring the SMS Gateway

#### **Third Party Vendor**

Northwind works with a 3rd party SMS gateway to facilitate sending text messages from the Maestro server through the Internet to the mobile phone carriers. Using an HTTPS protocol, Maestro sends SMS messages through the gateway. Users wishing to utilize the SMS feature in Maestro must sign up with one of the following third party suppliers. For either supplier, the SMS API product will integrate with Maestro.

#### ***Clickatell***

Main Site: [www.clickatell.com](http://www.clickatell.com)

Product: <https://www.clickatell.com/clickatell-products/online-products/sms-gateway-developers-central/>

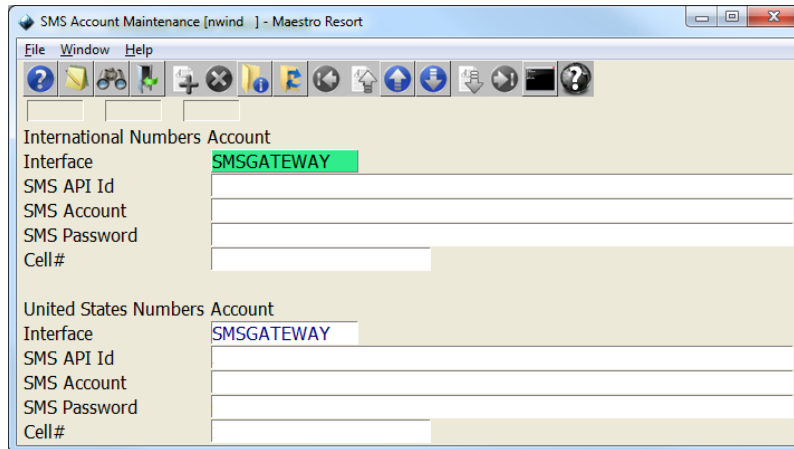
#### ***Swift SMS Gateway***

Main Site: [www.swiftmsgateway.com](http://www.swiftmsgateway.com)

Product: <http://www.swiftmsgateway.com/services/api/>

#### **Setting up Maestro**

To enter the credentials for the SMS go to **Global Maintenance | Codes | SMS Account Maintenance**



Use the F8 Lookup on the Interface field to select the appropriate third party vendor. Enter the appropriate API ID, Account, Password and cellphone number associated with the account.

### Windows Server Environment

Maestro must have the ability to send requests via TCP/IP port 80 to the Clickatell server. Firewalls should be set for Maestro to communicate with the Clickatell Server.