



Maestro Club Membership Card Printing Notes

Date: October 15

Background

The Maestro Club Member module has been enhanced to incorporate the addition and tracking of Members.

There are facilities within Club Member Maintenance to facilitate the necessary setup and configuration for Members. The Club Member program then includes facilities to manage Members.

Part of the process for managing Members is the allocation and generation of Membership Cards.

The physical printing and mag stripe encoding of Membership Cards has been achieved by the use of 3rd party software: EPI Builder 6 from Image Ware Systems. This 3rd party software is a COM interface and the solution works only for Windows installations.

Printing of cards is dependent on the availability of a suitable Card Printer. For test purposes Northwind have used a Fargo Direct Card 400.

EPI Builder Interface

The EPI software includes the print interface and also an EPI Designer application, used for the design of membership cards.

Three license types are involved with this software:

1. EPI Designer License
2. Developer License
3. Runtime License

The EPI Designer is required to run the EPI Designer application. This application is required for the design of the Membership Card Layout.

Membership Card Layout includes the inclusion and positioning of static background images, member specific images and member specific text for both printing and encoding. It allows for the definition of image and text data fields, used by the Maestro application when passing data to the EPI interface.

The EPI Designer application creates a DGN file, passed as a parameter from Maestro to the EPI interface.

Northwind Management will need to decide on whether to purchase an EPI Designer license. This license will give Northwind the ability to provide Membership Card Design services to their clients. It will also provide a level of control so that member cards layouts contain the fields required in the Maestro interface.

The Runtime license is required for printing membership cards. It is likely to be necessary at all client locations where membership card printing is required.



The following Maestro fields are passed as parameters to the EPI interface. The required fields should be included in the DGN file:

Maestro field	EPI Designer field
Cmmbr.Client_code	Client_code
Cmmbrcard.Card_number	Card_number
Maclient.name	name
Cmmbr.Member_type_code	Member_type_code
Cmmbr.Member_group_code	Member_group_code
Cmmbr.Start_date	Start_date
Cmmbr.end_date	End_date
Card layout filename (DGN filename)	Not displayed on Card
Image filename	Blank (No field name)

Maestro Setup

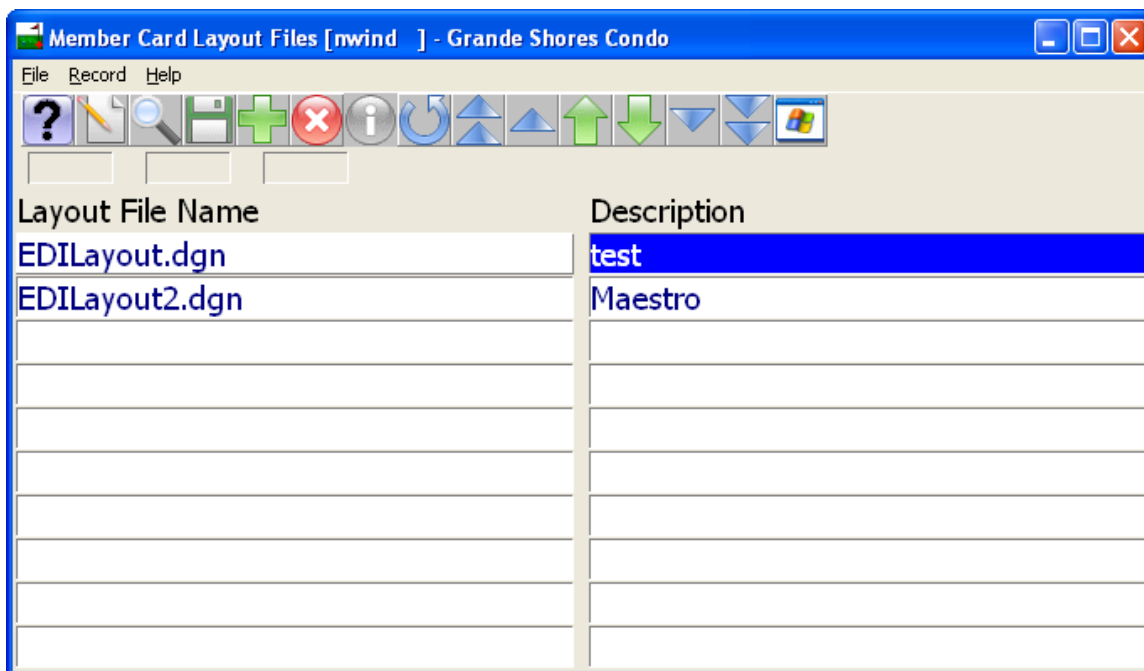
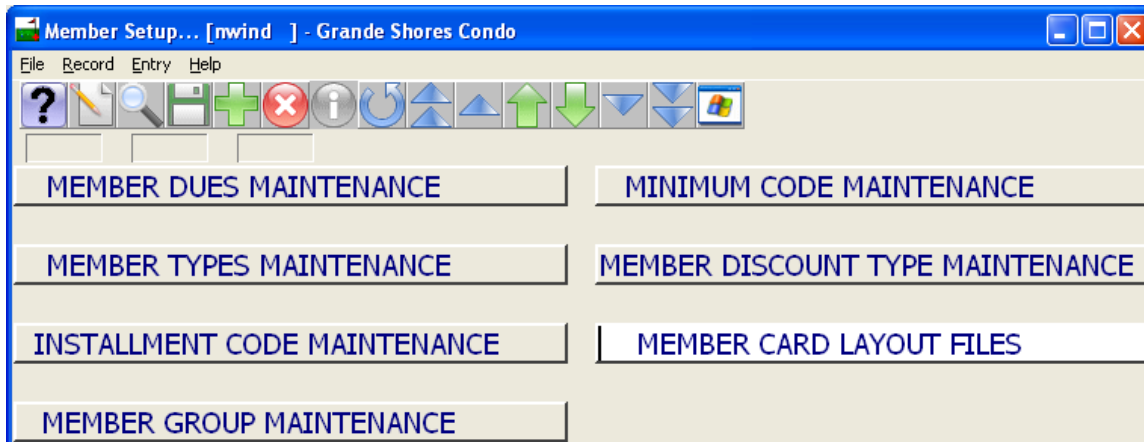
The Club Member Maintenance System Options program has two new fields that must be populated: Layout Folder and Image Folder.

The folders must contain a valid, existing folder name, where DGN Layout files and Member Images files respectively will be stored.

The screenshot shows the 'System Options' window for 'Grande Shores Condo'. The window title is 'System Options [mwind] - Grande Shores Condo'. The menu bar includes 'File', 'Window', and 'Help'. The toolbar contains various icons for help, search, save, print, and navigation. The main area lists various system options with input fields. The 'Layout Folder' and 'Image Folder' fields are highlighted in blue, showing the paths 'c:\maestrodev\mbr\layout' and 'c:\maestrodev\mbr\images' respectively.

FD Flag			
Use Text Entry			
A/R Client Code			
SvcPkg Brk Clnt			
Posting Code			
Gratuity Pst Cd			
Facility Inv			
Shuttle Inv			
Service Inv			
Activity Inv			
Alternate Inv			
Def. Guest Type		For Alternate Inventory Rates	
Gst Pkg Rate Cat			
Source Business			
FD Res Cancel			
FD Res Change			
Skip NA Svc Posting	N		
Member System On	Y	Layout Folder	c:\maestrodev\mbr\layout
Create Mbr Due Folio?		Image Folder	c:\maestrodev\mbr\images
Crystal Mbr Flag			
Consolidate Mbr Stmt			
Member Stmt Format			
Receipt Code			

It is also necessary to configure Maestro so that it knows about the available DGN Layout files:



The files specified in this screen, must exist and be located in the Layout Folder defined within System Options.

Membership Card Printing

Members are managed through the Member Profile screen within the Club Management module.

The Member Profile screen has a drop down menu allowing users to allocate Membership Cards to a member:

The Member Cards screen enables the creation of Membership Cards for a Member. The user must enter a member card number, directly or via a card swipe (if the card has been pre-encoded).

The user must enter a Layout Filename for the membership card and optionally an image filename to be printed on the card.

There is then a drop down menu option that enables the Membership Card to be printed