

# Maestro Member System – Discount Percentage Calculations

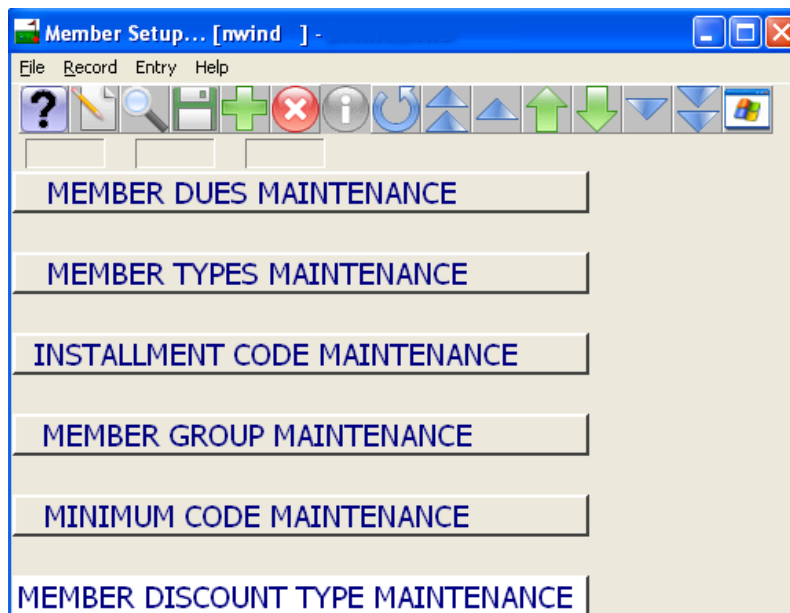
The Maestro Member System includes mechanisms to record Discount Eligibility and Thresholds that can be applied to the Members of selected Member Groups.

These discounts are intended to be applied at the point of purchase from specified property outlets, and can be configured to apply to specific purchases (via posting code), on specific days of the week and are variable based on the property wide spend by the member within a specified time frame.

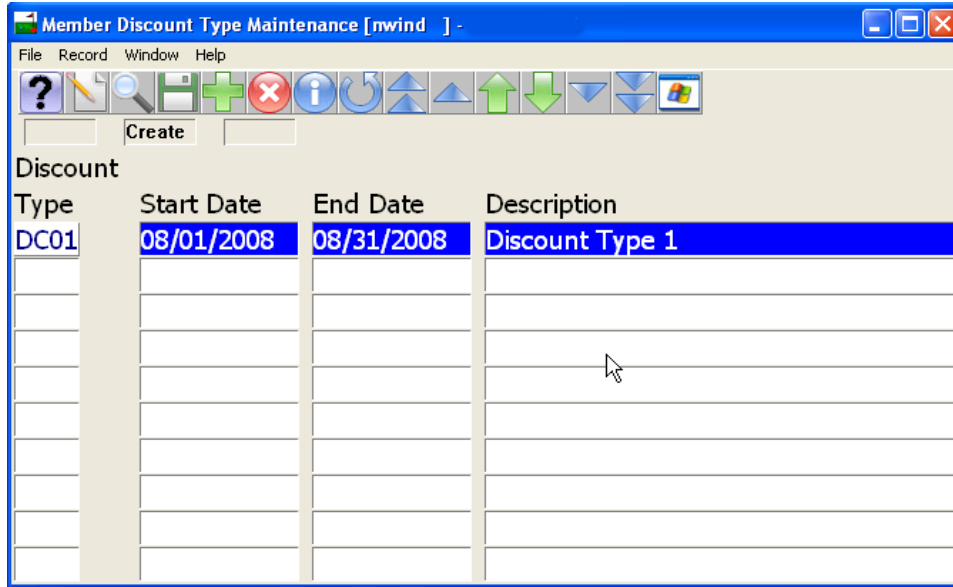
This document provides a refresher on how The Member Discount System is configured and how when purchases are made at a designated outlet, the discount percentage is calculated.

## Review of Maintenance Screens

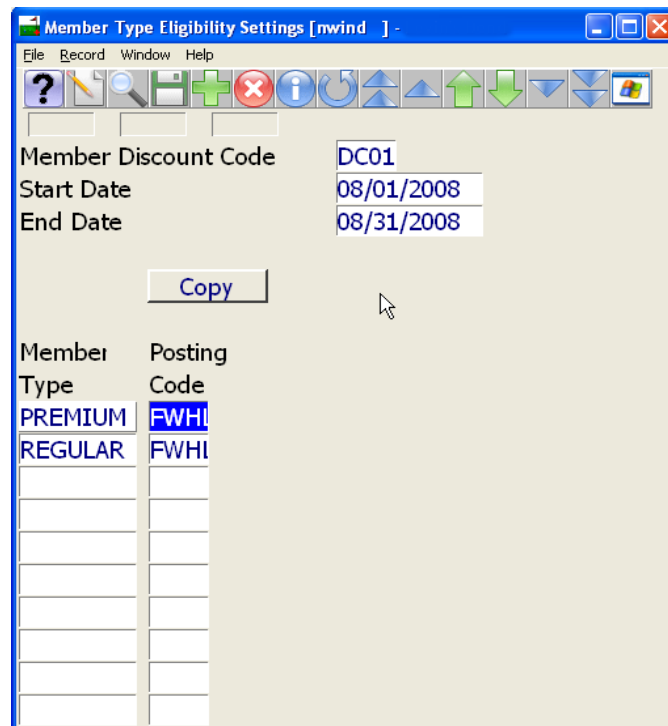
Configuration of the Member System Discount System is driven from the Member Discount Type Maintenance Screen, accessible from the Member System Menu of the Spa Maintenance program.



The Member Discount Type Maintenance Screen allows for the configuration of Discount Types with date ranges during which the discount type is applicable. A discount type may have several entries with discrete time periods. Each Member Profile can be configured with a Discount Type.



Each Discount Type can be configured to have a set of posting codes that are used to determine the qualifying purchases that will be considered for discounts. Posting Code eligibility is configured using the Member Type Eligibility Settings screen available from the Window menu option.



Each Discount Type must also be configured with the discount percentages that apply for members of specified member types, that have spent more than certain amounts during the qualifying period. The discount percentages are also configurable to apply on specified days of the week and can be differentiated by Member Type.

Member Type Threshold Settings [nwind ] - Levin's Bend

Member Discount Code: DC01  
 Start Date: 08/14/2008  
 End Date: 08/31/2008

Copy

Member Type	Sales Location	Week Day	Amount	Disc %	POS Disc
PREMIUM		MON	200.00	2.50	

### Discount Percentages

When a purchase is made at an outlet, then as part of the capture of the purchase information, the Member Discount Calculation will be performed.

Member Discount processing works only when the Member System is ON. The calculation is only applied when the system determines that the client code relates to a valid member, for whom there is a Member Profile.

The Member's discount type and Member type are read from the profile and used to establish whether the transaction's posting type qualifies for discount for the Member's discount type and member type. Determination of posting code eligibility can be made using the Member Type Eligibility Settings screen, available from the Member Discount Type Maintenance screen from the Club Maintenance program. For a discount to be available, the purchase transaction must be dated within a time frame for an entry for the discount type as displayed on the Member Discount Type Maintenance screen.

If the purchase is a qualifying transaction, then the amount of the discount is then determined. This is based on the entries in the Member Type Threshold Settings screen, for the Discount Type. It should be noted that the discount amount will depend on the Member's member type, and the purchase taking place on a matching day of week as one of the entries. It should also be noted that there is a qualifying spend amount in order for a specific discount to apply. The discount applied to the purchase will be the discount percentage applied to the entry for a matching day of week with the greatest spend amount that the Member's spending has exceeded during the displayed time interval.

### Qualifying Spend

A Member's qualifying spend is derived from charges recorded within all modules at the property except for the Owner Condo module.

It should be noted that qualifying charges related to reservations recorded from the Front Desk are only taken into account when the Member is no longer In-house.